

Additions to Steelwork for a Safer Project

The Steel frame is usually the first item fitted above ground and things can be designed into the structure to make erection safer, reduce time working at height and help protect following trades.

1. Positive Lifting Points with holes for Swivel Eye Bolts.
2. Purpose made lifting lugs for larger Items.
3. Hook points or holes in columns and beams to aid netting of floors and roofs.
4. Cast in Sockets or bracket to fix edge protection.

Advantages

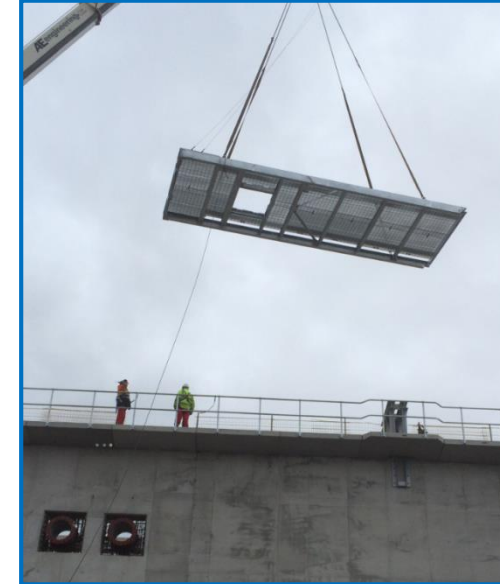
- Positive Lifting points using chains is much safer than using strops which can fail due to wear or slippage.
- Hooks or eyebolts for netting offer quicker installation.
- Quick fix edge protection reduces hazards and can be more economical due to reduced installation time.

Issues to Consider

- Ensure that holes or fixing brackets are designed to take the required loadings.
- Ensure that any features added do not cause aesthetical problems for the building.
- Liaise with other trades to establish location of fixings.



Inserts for Edge Protection



Lifting with Eye Bolts



Eaves Edge Protection Brackets



Lifting Lugs



Swivel Eye Bolts



Connection Points for Netting