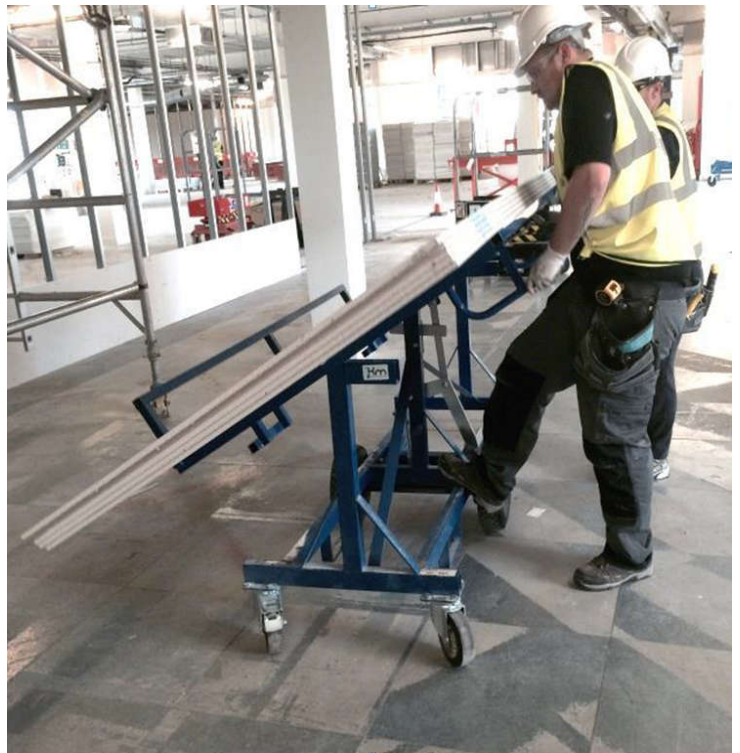


Sheet Materials Movement

The movement of large sheet materials has been a real concern on some sites, with their unwieldy shape and size catching out numerous tradesmen and site operatives, who have suffered unnecessarily due to poor manual handling and double handling. This kind of board trolley eliminates a lot of the double handling, as sheet materials are loaded in a vertical plane and manoeuvred throughout the site. Once in the desired location, the press of a pedal puts the brakes on, and allows the trolley to tilt, converting it into a convenient work bench.



Loaded Trolley Being Moved



Trolley Tilting Into A Work Bench

Key Points:-

- Ergonomic transport of cumbersome unwieldy sheet board materials.
- Can negotiate narrow corridors and moves easily over rough surfaces.
- Switching between horizontal and vertical positions.
- Function as a workbench meaning operatives no longer need to work at floor level
- Sturdier than the normal sheet / board trolleys used on most sites.

For Further Information Contact Chris Sorensen (Overbury) – Tel 07794 392459