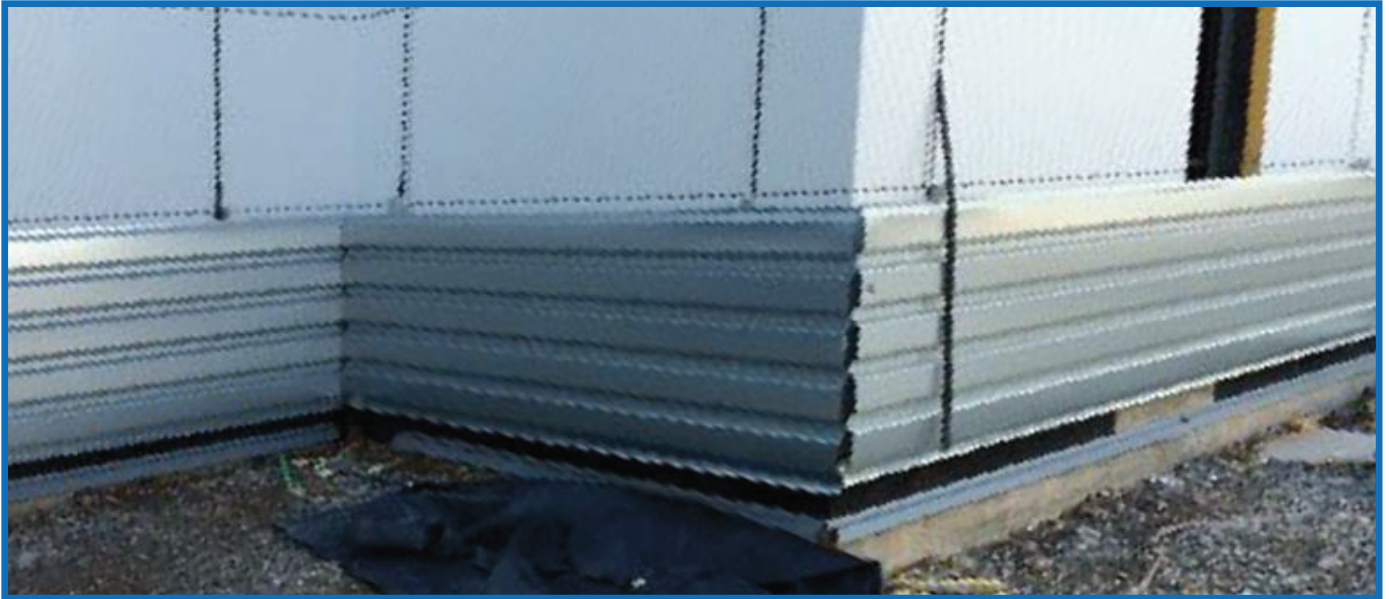


## External Envelope Protection

Damage to the external envelope during the construction phase can be disruptive, costly and an indication of poor management practice. The implementation of temporary protection can be problematic as a robust system is usually unplanned and control measures usually fail as external site conditions evolve. Lakemere however have created a standardized, robust, fast fix solution to the perimeter of the building to protect against damage from vehicles and stored materials.



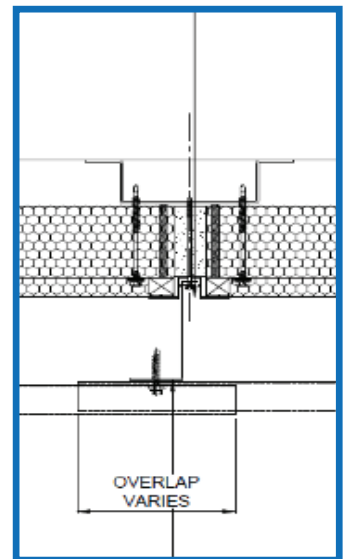
*Temporary Protection Fitted to the Perimeter of a New Building*



*Rail End Fixing*



*Plant Close to Wall*



*Typical Plan Section*

### Key Points

- Uniform lengths of panels and standard fixing details increased speed of installation.
- Robust galvanised sheets vastly reduced the risk of damage, especially on site traffic routes.
- Site signage was fixed to the temp sheets protecting the finish of the main building.
- Sheets can be easily removed or modified via a standardized fixing bracket seated within the final fix top hat sections.
- Sheets can be easily painted to indicate traffic or escape routes.
- The scheme is financially viable if compared to the cost and disruption of repairing damaged sheets or flashings at the end of a project.