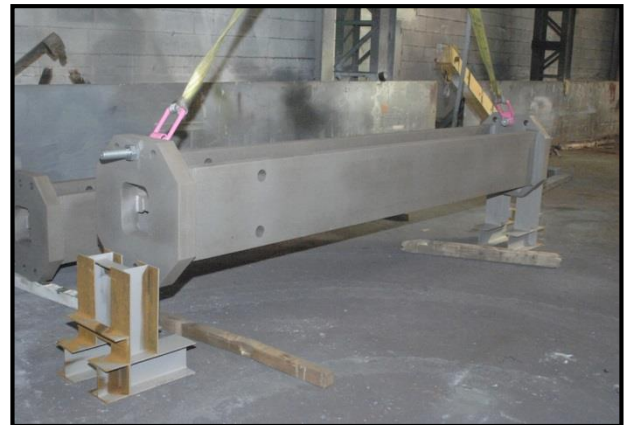
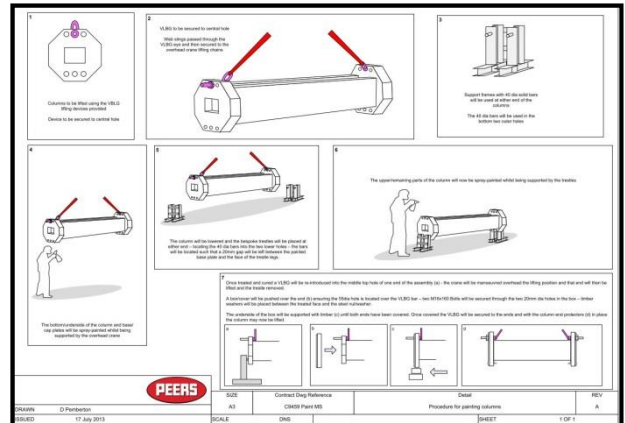


Column Supports for Painting

On a recent project Peers were challenged with providing an extremely high quality paint finish to heavy columns. This meant that the conventional process of supporting the columns on trestles and turning was not possible due to the paint damage caused by the frames. Peers got around this problem by fabricating purpose built trestles which supported the columns using the holes in the base plates. This meant that the columns could be painted without the normal damage associated with conventional frames.



Key Points

1. The support frames were fabricated from small UC battened together using small unequal angles.
2. A detailed method statement was produced by the Project Manager (Pic top right).
3. The support studs were 40 dia solid bar in 46 dia base plate holes.
4. The weight of each frame was less than 50kg which allowed them to be easily move into position manually.
5. Some of the columns were in excess of 5 Tonne so it was important that the frames were fully inserted to within 20mm of the end plate.
6. The bending force on the studs was high and required a large fillet weld to resist the bending forces.
7. Half a dozen sets of supports were used for all 129 columns.

For further information contact Chris Achilles (Peers) – Tel 01204 558500.