

Heavy Glass Buildability - Sketch Sequencing Drawings Guidance

The Problem / Challenge

Building with heavy glass elements

The Risks

Avoiding heavy manual handling operations

The Solution

Early identification of the issues to the client and contractor. Analysis of the access and crange capabilities of the site and structure are essential to validate the decisions and locations of large elements

The Benefits

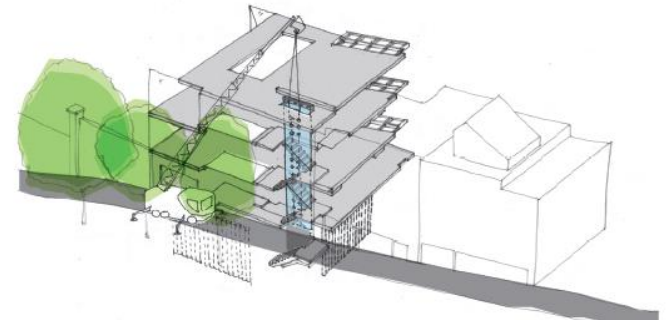
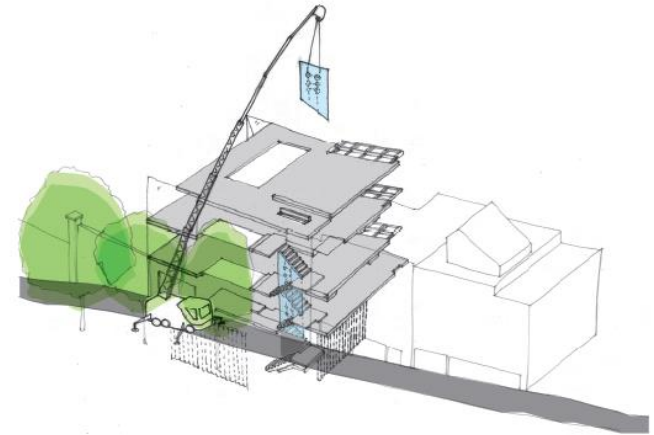
Sketch analysis of the building and likely lifting operations allows anticipation of the issues involved. The design can then be modified if obvious problems are likely.

Large units can be advantageous to CDM if mobile or static crange is possible.

Key Points

Review the buildability and access issues with contractor as early as possible . Cost benefits may be possible as well as safety benefits.

(Drgs. By Elliott Wood Engineers)



For further information contact Paul Bussey (Scott Brownrigg/DIOHAS) Tel - 0207 240 7766