

# **Roof-lights and Fragile Roofing Materials**

## **Detailed Design Guidance**

### **The Problem / Challenge**

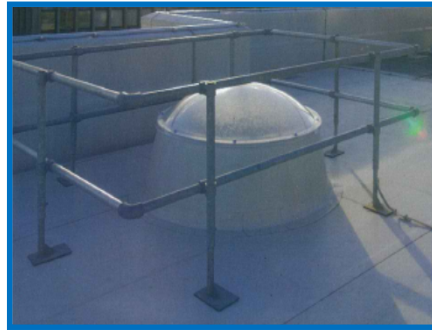
Roof-lights and fragile roofing materials are economic, sustainable and aesthetically desirable features which should not be eliminated from design projects purely for reasons of safety.

### **The Risks**

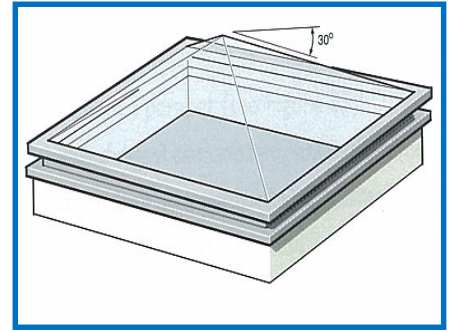
Falls through fragile roofing materials are statistically high and often highly injurious or fatal



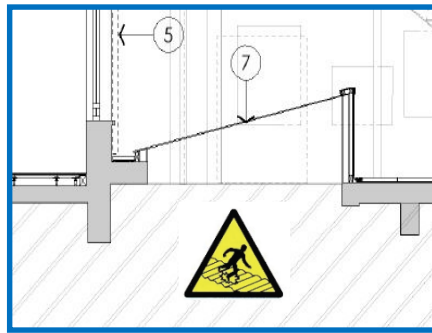
***Designated Walkways***



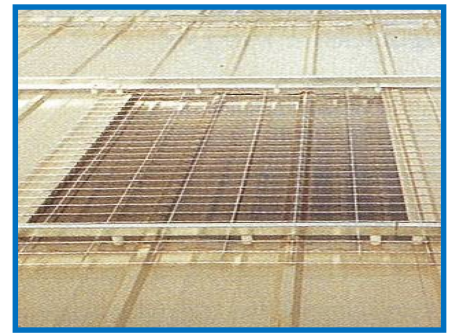
***Handrail Protection***



***High Pitched Lights***



***Warnings on Drawings***



***Mesh Protection***

### **The Solution**

- Construction Phase - Important to identify existing and new fragile roof lights and other fragile roofing materials on drawings as a method of informing the contractor to control the risk of falls through these materials during construction.
- Contractors to recommend methods of temporary protection in tender or construction phase plan proposals to show their response .
- In-use - Additional protection measures are required for the longer term in use condition such as metal railings, barriers, wire mesh or non - fragile walk on type roof lights.
- Avoid in-plane roof-lights or sheeting.

### **The Benefits**

Natural daylighting is a human right and engenders healthy and sustainable environments

### **Key Points**

- Walk-on roof lights tend to be very expensive so control mitigation measures are necessary.
- Use Symbols on drawings to warn of hazards.
- Safe Cleaning methods also need to be considered.

**For Further Information Contact Paul Bussey (Scott Brownrigg) Tel 0207 240 7766**