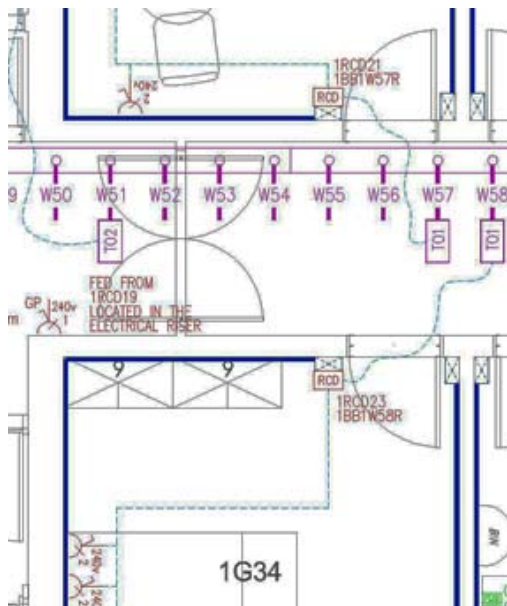


Use of Bus Bar Trunking

By using Bus Bar trunking the installation benefits with more flexibility for future electrical supplies. FCU's on a recent project were added at a late stage in construction. The units were able to be added to the trunking, preventing the installation of long runs of cable back to switch rooms.



Bus Bar shown on plan



Bus Bar shown in ceiling void

Key Points

- Better Flexibility.
- Can cope with additional requirements during construction.
- Can be made live so as to allow early removal of site temporary cables
- After completion of a project, less disruption is caused to ceilings to add additional supplies. Work is localised.
- Ceiling tiles do not have to be removed along lengths of corridors to switch rooms to install new cables.

Contact

Brian Forshaw – Boulting Group – 01625 531288