

Pre-installed Supports for M & E Services

The Problem / Challenge

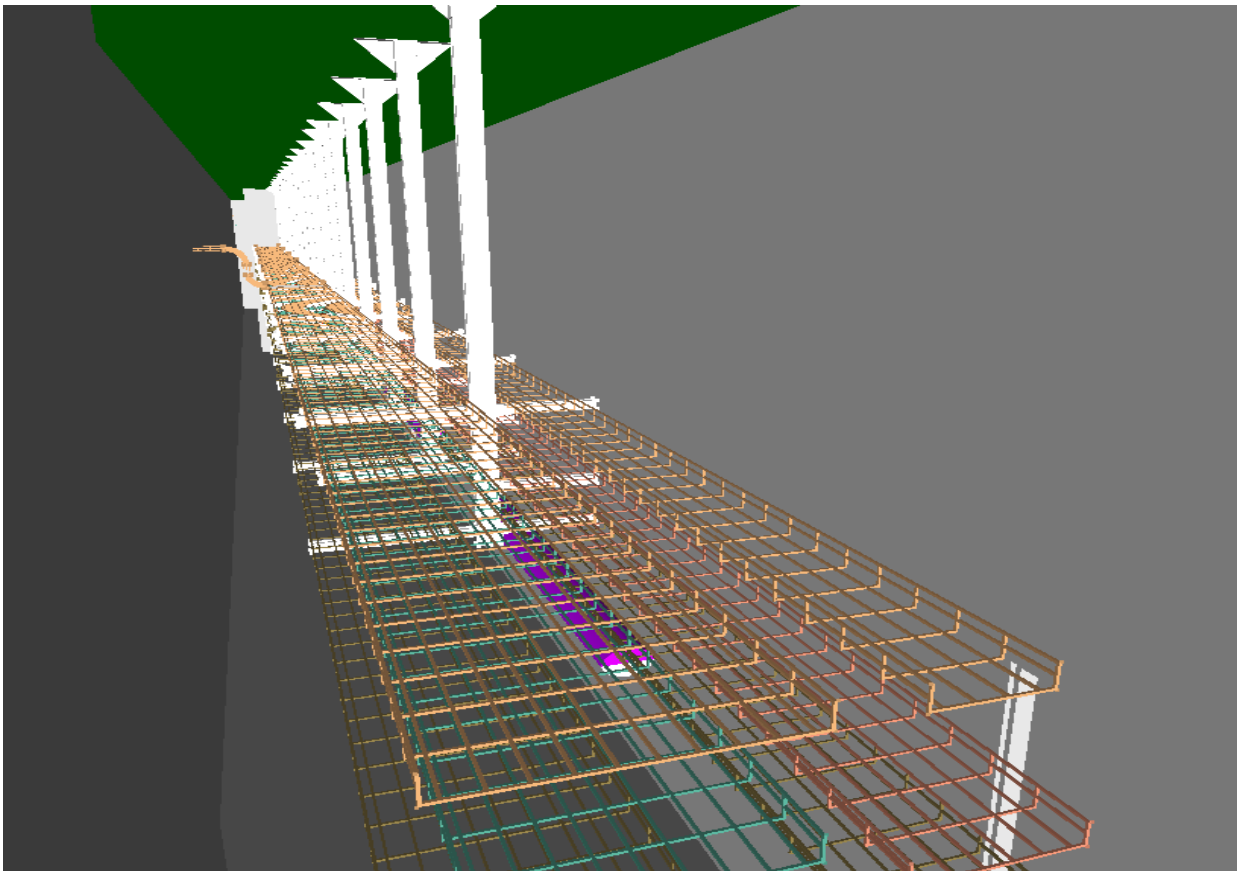
The designers of the Mechanical and Electrical (M&E) installation for a complex project wanted to reduce the risks and programme time associated with the M&E installation,

The Risks

The installation of M&E is often left to contractors to manage. This can require significant work at height, which is made more difficult by obstructions. There may also be a need to drill significant numbers of holes for the fixings, giving rise to a risk of hand arm vibration.

The Solution

A well designed, pre-installed support system was specified that significantly reduced the risks associated with installation, It also helped to improve productivity for both installation of the support system, and installation of the services, leading to a significantly shorter programme..



The example shown has a simple mechanical fixing to the soffit of the floor slab.

The Benefits

The design of the supports allowed good access for the initial installation of services and cabling. It also meant that access could be easily achieved for subsequent maintenance and replacement. There was a reduction in the need to drill into the soffit, leading to improved quality, reduced exposure to vibrating tools and reductions in the noise generated.

Key points

- Early layout coordination with other designers, looking at the positions of ceiling grids and working out the ductwork routes was required.
- Early establishment of the sizes and positions of the cable trays and service routes was required.
- Consultation was needed with the suspended ceiling designer to ensure that appropriate access panels were provided that would allow sufficient space for access.