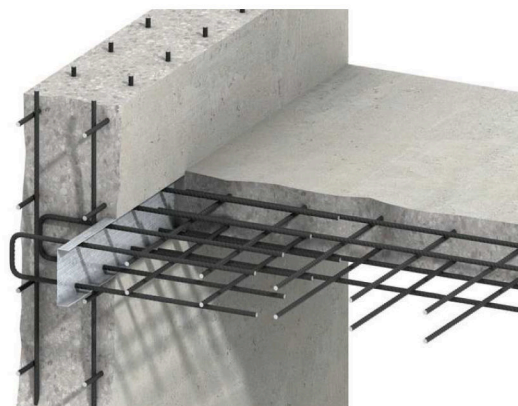


## Proprietary Reinforcement Continuity System for Reinforced Concrete

Ancon Building Products offer Eazistrip for use at the joint between a concrete wall and an is-situ concrete floor, or at a joint between two concrete walls. It is used to facilitate the embedment of starter bars within the first member, and their manipulation into the final position within the second member. Eazistrip consists of pre-bent starter bars housed within a galvanised steel channel which is fixed to the shutter or tied to the reinforcement.. After the shutter is struck the starter bars are freely accessible in the concrete free space between the channel flanges, and may be bent out into their final position using a proprietary tool provided. The concrete for the second member is cast around the bars and into the rebate formed by the channel.



As fitted Eazistrip - vertical joint wall to wall



- horizontal joint slab to wall  
(extract from Ancon brochure)

- Simplifies wall formwork design - no need to incorporate joints in the formwork itself.
- Saves time - aids fast track build
- Easy to use - may be used by operatives after little training
- No formwork damage or wastage - no drilled holes in shutters / no wasted stop ends
- Enables 'system formwork' to be used - e.g. steel forms / climbing forms
- Starter bars remain protected and clean - they are inside the channel until needed
- No projecting starter bars - improves access, improves safety
- Improved shear connection - provided by the joint rebate.
- Cutting/preparation of concrete not required - dimpled surface of channel aids bond
- Flexibility of detailing - available incorporating straight bars, U-bars, L-bars to choice
- Not restricted to straight joints - available with channel bent to a radius
- Prevents water ingress where necessary - available with integral hydrostatic seal

For further information contact Andy Gorny : Mott MacDonald Ltd : 0161 926 4336 : [andy.gorny@mottmac.com](mailto:andy.gorny@mottmac.com)