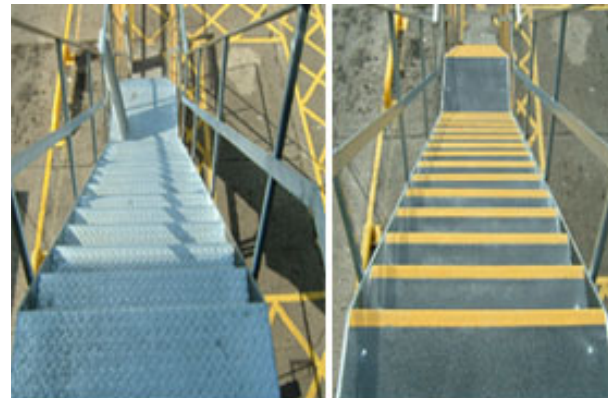




SlipGrip

SlipGrip Stair Treads

The SlipGrip product, which gives a full covering of the whole stair and landing area, offer extreme slip resistance due to the carbon grit which is chemically bonded to the top surface.



BEFORE

AFTER

A high percentage of SlipGrip stair treads are installed over traditional steel checker plate stairs. Checker plate stairs are notoriously slippery in wet and icy conditions.

SlipGrip stair treads are easily installed over this type of steps. Simply adhesively bonded and also screwed in place. The anti slip stair treads provides an excellent slip resistant surface no matter what the conditions.

Mr. MJ Keighery (MD)
Temple Somerville (P&D) Limited

mike@templesomerville.co.uk
0161 683 0133