

Dominator Flow Management system for HVAC Pipework

For Fan coil units & other terminal devices i.e. Chilled beams.

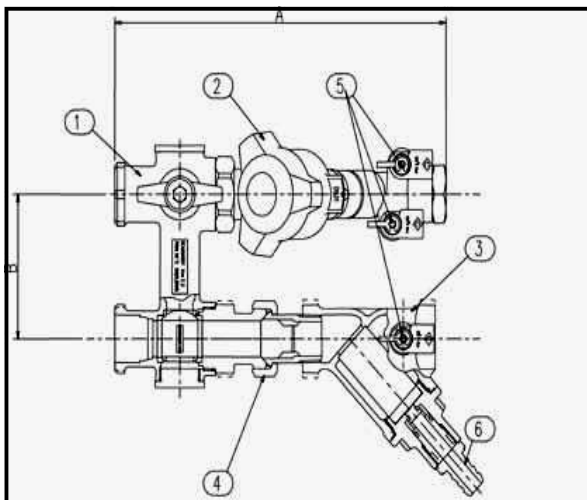
Reasons for using this Technology:

- Fast installation, Saving in Time/Manpower on Site.
- Allows easy Flushing, without Pipework Disconnection or installation of Temporary Flushing Loops.



Typical 4port Control Valve arrangement for LTHW/Chilled water to Fan Coil unit utilising Dominator Z3000.

- Low Flow rate & Ultra Low Flow rate versions available.
- Supplied complete with patented By Pass valve unit, comprises 2No 'T' - ported Ball valves, allows easy Back /Forward Flushing & Isolation.
- 'T' Handle gives clear indication of Flow/By Pass mode.
- Chilled Water Versions include extended Stems(EXS) on the ball Valve 'T' handles to allow for the thickness of the pipework insulation & reduce penetrations to the Vapour Barrier.
- Also available with "Moto balance" combined Commissioning Regulating/Control Valve, suitable for On/Off & modulating temperature Control. Double regulating feature allows the Valve Opening to be Manually set.
- "Moto balance" Valve should be fitted with a suitable motorised Actuator either 24V or 230V Supply.



Main Components:

- 1 BYPASS VALVE
- 2 PROBANCE VALVE
- 3 D297 STRAINER
- 4 UNION
- 5 P84 PRESSURE TAPPING6
- 6 DRAIN-COCK

For Full technical specifications, details & Cost Comparison either speak to the contact below or use the following Link.
Web:www.cranefs.com

KEY BENEFITS:

Saves Time/Reduces specification risks & provides maximum value to the Client.

Significant Reduction in Site labour & Installation Costs.

For pipe Sizes in the range 15Ø to 25Ø Savings of Approx 50/60% can be achieved in

For Further Information Contact:

Paul Wilde, Boulting Environmental Services Ltd, Tel: 0161 655 3344