

## COMMISSIONING MODULES FAN COIL + CHILLED BEAM HEADERS

### Main Advantages

The use of centralised manifolds allows valving arrangements to be located at one point, with centralised commissioning sets, terminal branches that flush, vent and back flush centrally.

Can be used to control up to 6 Fan Coils per module

Particularly useful in chilled water applications.

Flow balances hold when changes have occurred elsewhere.

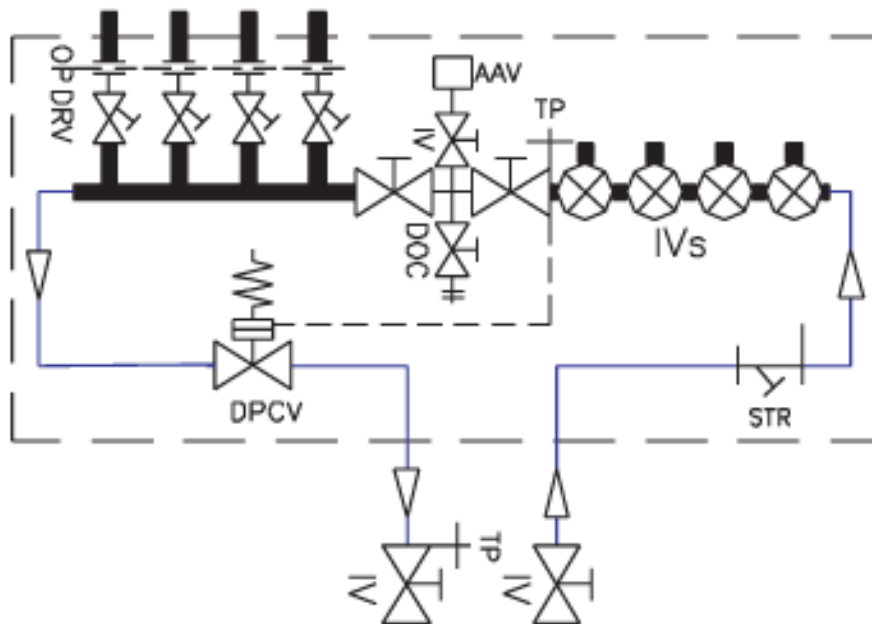
No requirement for upstream balancing valves.

Commissioning procedures are simplified. With centralised balancing.

Between sub circuits entrapment of air can be dealt with by fitting within the module an air bleed.

Centralised and less frequent maintenance, the modules can be configured to contain line filters and ball valves

The modules are usually configured with PEX multi layer flexible pipe work making them particularly useful for chilled water application within ceiling spaces



### Typical Combined Commissioning Module

By configuring a system down into groups further energy efficiency can be achieved with Differential Pressure Control Valve (DPCV) located in each of the commissioning modules allowing the use of modulating pumps.