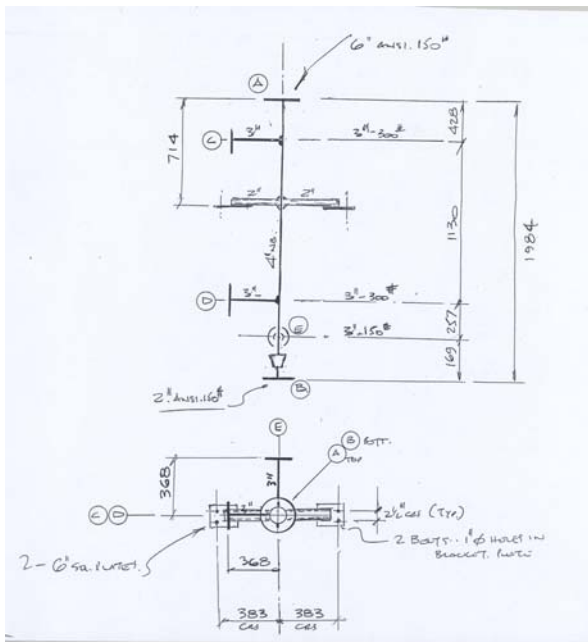


Use of Sacrificial Pipework to Maintain Construction Programmes

The installation programme associated with the replacement of three condensers was at risk due to design development and the long delivery lead times associated with the replacement tantalum condensers.

Rather than wait for the condensers to arrive, dummy condensers were fabricated from pipe with flanges positioned to replicate the pipe tie-ins on the actual condensers. These “dummies” were installed in the support frames and this allowed the completion the manufacture of the connecting pipework. When the condensers arrived they were installed, pipes were bolted into final position and the construction schedule was maintained.



Preliminary design for the sacrificial pipework



Condenser in final position

The use of pipework as a temporary substitute for mechanical equipment can be used to save time during engineering projects whilst smoothing the way for quick and safe installation of the equipment when it arrives.

This may seem like an obvious and trivial practice, however, it saved the customer time and expense, reduced the risk associated with a rushed installation and was recognised through an award for initiative; so perhaps it was not that trivial after all.

For further details contact John Lockwood on 01925 570077