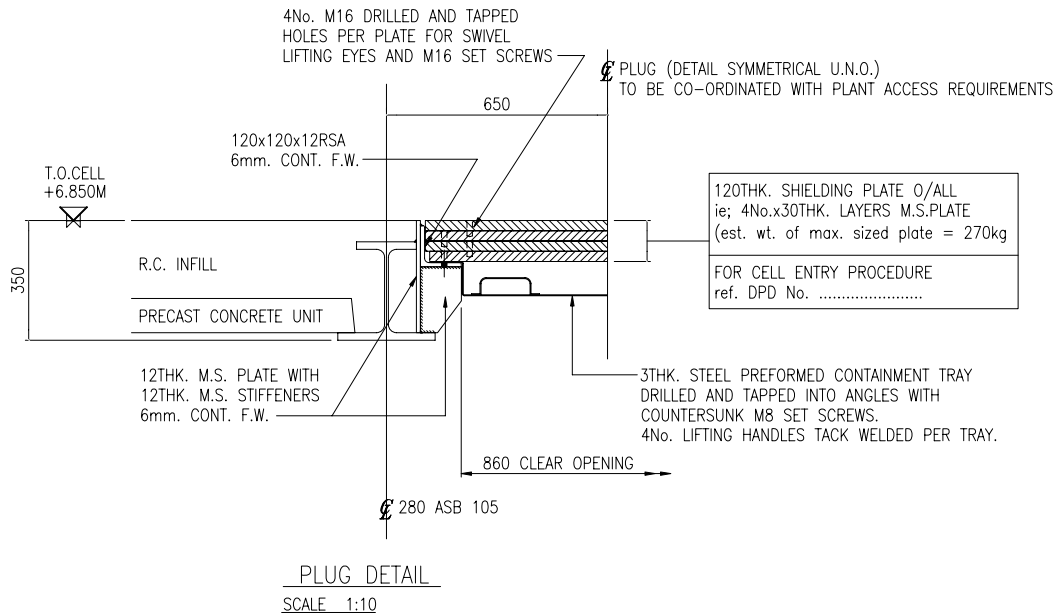


# STEEL PLATE PLUG DETAIL



A plug detail was required for an access point in a reinforced concrete roof slab. The plug was required to provide containment and shielding. This detail utilises steel plate for the shielding with a separate tray to provide containment.

## **Benefits**

- Using several layers of steel plate instead of a solid concrete plug reduces the weight of each lift and the potential drop load on to the concrete slab.
- The separate containment tray can be left in place during removal of the shielding, maintaining the seal and simplifying the lifting operations.

For further information contact Peter Hargreaves of Multi-Design Tel. 0161 477 0766