

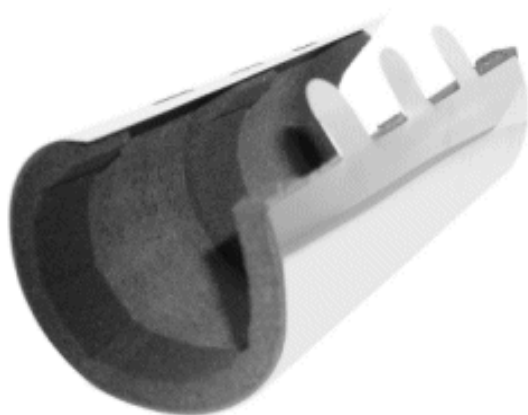
## **Fire Stopping - Pacifyre Pipework Fire Stop**

Pacifyre<sup>®</sup> MK II Fire Stops from IHL are a one piece, one length stainless steel sleeve complete with closure tabs and slots, having an intumescent lining the full length of the unit with 3 bands of Acoustic Foam adhered to the bore of the unit. One length, two types: metal or plastic.

The units are wrapped around the pipes by hand and slid into the wall/partition. The Pacifyre<sup>®</sup> MK II replaces the time consuming and unreliable method of fixing an over-size pipe sleeves, packed with mineral wool, sealed with intumescent mastic.

In the event of a close proximity fire the Pacifyre<sup>®</sup> MK II Fire Stop lining of intumescent activates at 140°C and expands to over 16 times it's own volume to create a fire proof seal between the pipe and the wall which prevents the spread of fire between building compartments.

Manufacturers web site. [www.walraven.co.uk](http://www.walraven.co.uk)



### **Key Points**

1. Fast, economical and flexible fire stop.
2. For all pipes, two types
3. Type 1: Metal and insulated pipes
4. Type 2: Plastic pipes
5. Confidence
6. Quick and easy fitting
7. Cost effective
8. One length fits all (205 mm)

Nick Hampson – Boulting Environmental Services: tel – 0161 655-3344