

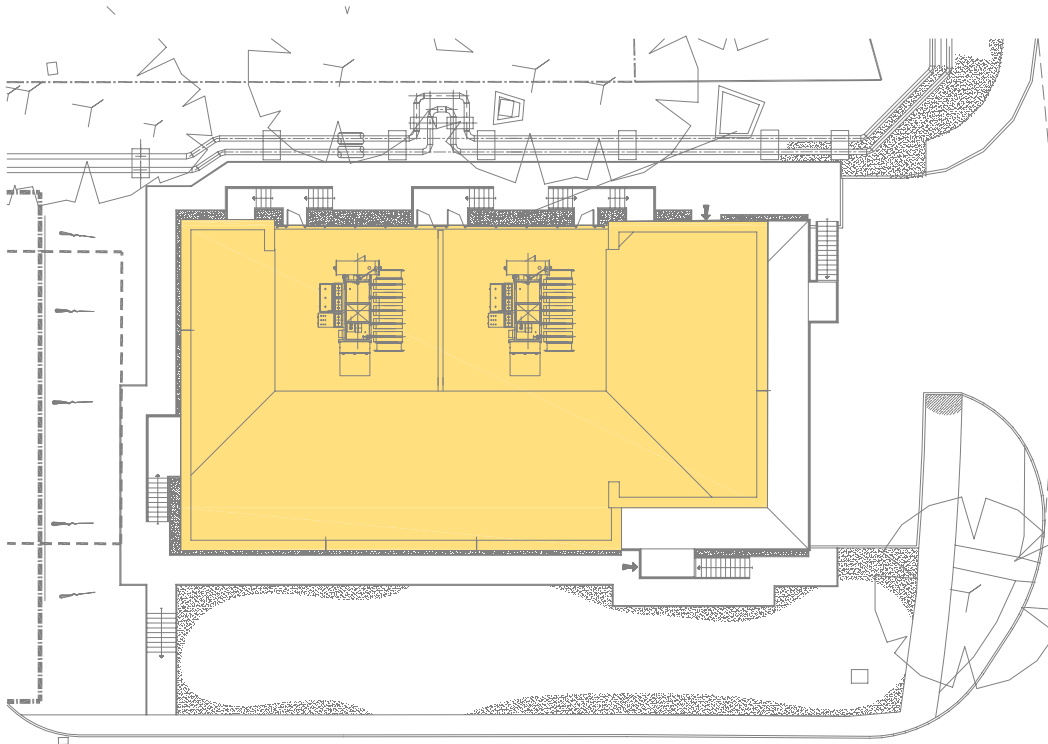
## Building Layout

A new building currently under construction forms the second phase of an Energy Centre Development.

The building is located in an area with a large number of existing underground services including high voltage electricity supplies and sensitive data and comms cables. The very tight site is bordered by a road to two sides and over ground high-pressure pipe work along its western boundary.

At the start of detailed design the layout and method of construction of the building was challenged in relation to Health and Safety issues relating to excavation near to services.

The building layout went through vigorous re-planning exercise to reduce the internal floor area and overall width of the building to the minimum possible in order to reduce works adjacent to underground services. The scheme was resubmitted for an amendment to the original Planning Permission, once the layout had been frozen.



## Key Points

- Layouts should be challenged especially in relation to Health and Safety issues during construction. Planning Permission's are not cast in stone and Local Authorities are willing to amend layouts for good reason, as part of the original approvals
- As with most design work the more information and time taken at the outset to provide as detailed survey information as possible will have benefits in the long term.