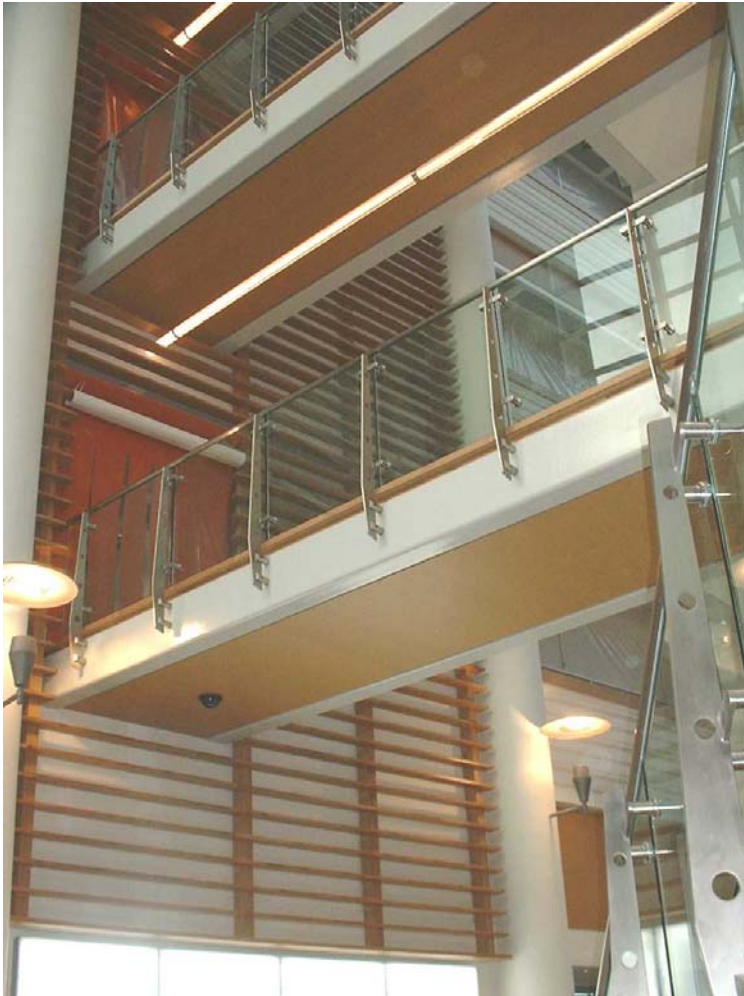


## Glazed Balustrades

Architect, Designers, Developers and Clients seem to include as much glazing as possible in modern buildings. Frameless glazing, glass balustrades, glass floors and walls are a favourite choice to ensure that buildings are as light and airy as possible internally.

Care should be taken ensuring that glass at high level is correctly specified and if it breaks it is held in place and will not fall. The Building Regulations include the requirement for toughened glazing but in addition a laminated interlayer should be considered if there is danger of the glass falling onto people below.



### Key Points

- Care should be taken when specifying glazing at high level. The possibility of glass breaking and falling is a real concern.
- Discussion and advice from glazing manufactures should be sought as early as possible in the design stage in order to specify and provide the correct glass for its location
- Glazing can be a very expensive building element, laminated interlayers can be very costly. It is essential to get the glass specification correct from the onset.