

## **Cost effective 3D modelling (SketchUp)**

When seeking client approval for projects in the early design stages traditionally they have been presented with 2 dimensional plans, sections and elevations, whether manually prepared or CAD produced.

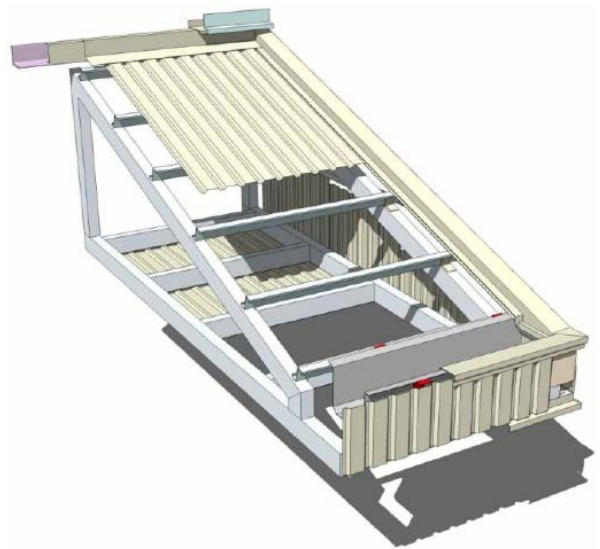
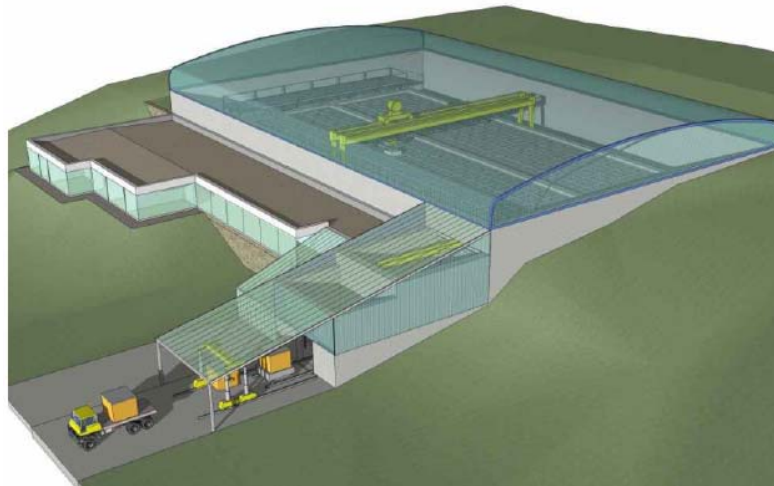
Not all clients can appreciate the three dimensional implications of their projects from 2D drawings and often the size of the project cannot afford the luxury of a physical model.



With the advent of cheap 3D modeling software (like SketchUp) it is now possible to give clients a fully rendered, coloured, three dimensional model of their projects .

The model can be electronically submitted to the client for approval and comment together with an electronic viewer which allows the client to view the model from all angles, zoom in and out, cast shadows for various seasons and times of day and print out any view he chooses.

With layers that can be turned on and off (in the same way as CAD programmes) it is possible for designers to build up a complex model to show how it is physically constructed prior to committing the design to working drawing stage.



### **Benefits:**

- cost effective investment for designers
- programme is intuitive and produces quick results
- clients get an immediate appreciation of what their scheme is going to look like which cannot be appreciated from 2 dimensional CAD drawings - potential design, clash and safety issues can be resolved at an early stage
- fully integrated with Autocad - will allow import of and export to

For further information contact Vic Beyens, Multi Design, 0161 968 7238

DBP00059