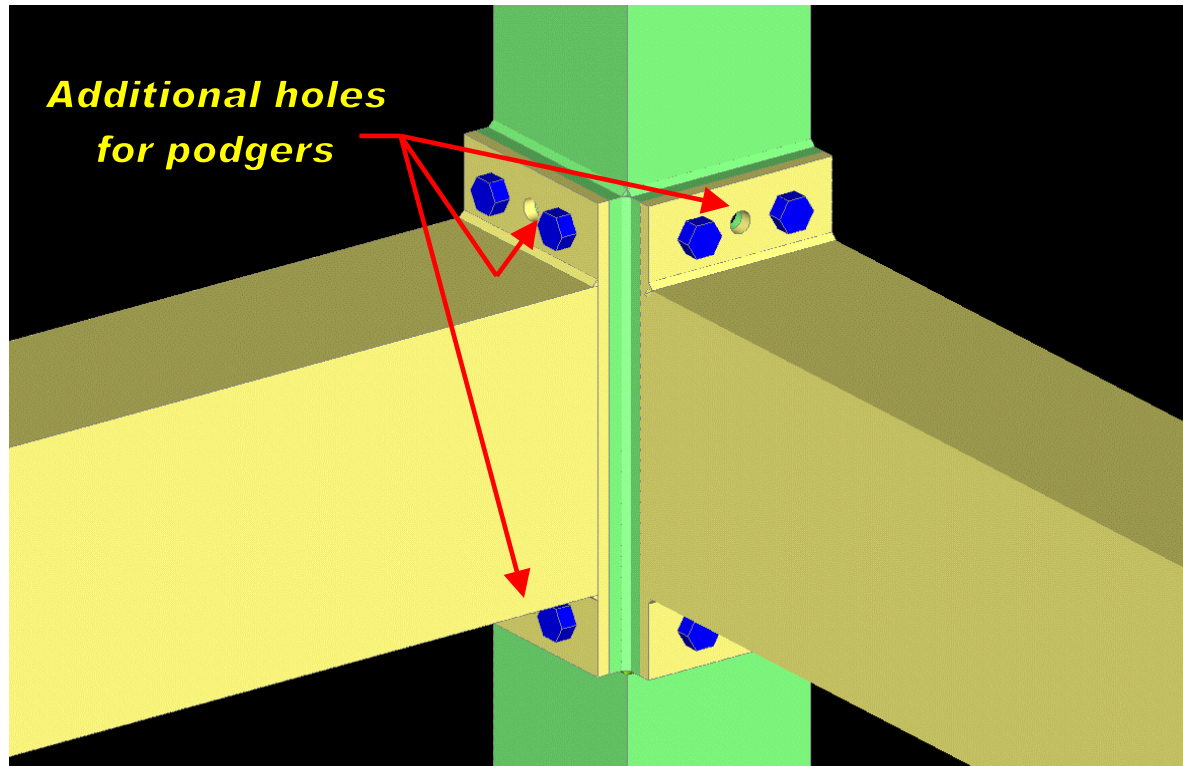




Podger Holes to Aid Erection.

Connecting beams to RHS or SHS posts is never easy and when dealing with high loadings will often require tapped holes in packing plates welded to the column. Using Podgers in the tapped holes often damages the threads causing problems on site. This is where an additional couple of plane holes can prove extremely useful for the erectors.



Key Points:-

1. Additional centre holes provided which pass through both plates and the wall of the box section post. 2 holes per end both top & bottom.
2. Tapped Holes reduce fabrication tolerances so Podger use is increased.
3. Plastic plugs can be used on exposed joints to seal holes.
4. Additional hole treated as a bolt hole when considering bolt centres. The hole could be located above the bolts if minimum c/c is a problem.
5. Damaged tapped holes can prove very expensive, causing delays in the erection programme and any repairs will often involve working at height.
6. Ensure that the erectors know that the holes are there to help them and that they do not use Podgers in any tapped holes.
7. Podger holes will dramatically reduce the chances of damage to tapped holes.

For further information contact Chris Achilles (Peers) – Tel 01204 528393.